



Nutrition Translation - From Bench to Consumer

March 2013

In This Issue

- Experimental Biology 2013
- NT-RIS Elections – Nominate Yourself or Your Colleague Today!
- Student Update

EB 2013 - What not to miss!

According to our most current survey data, the top two reasons for being a member of the NT-RIS are to enhance professional knowledge and network with colleagues. NT-RIS events at EB 2013 are the perfect place to do both! All events below will take place in the Boston Convention and Exhibition Center.

Sunday, April 21: NT-RIS Mini-Symposia

- *Nutrition Translation – Understanding & Communicating Nutrition Science to the Public*
 - Chaired by Kari Hecker-Ryan and Beth H. Rice
 - 8:00 – 10:00am EST
 - Room #154
- *Nutrition Science Translation for Policy, Practice and Consumers*
 - Chaired by Rachel Cheatham and Donna Winham
 - 3:00 – 5:00pm EST
 - Room #154

Monday, April 22: NT-RIS Annual Business Meeting

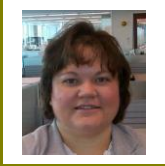
- 11:30am – 1:30pm EST
- Room #150
 - Annual update
 - Nominations
 - Networking lunch

Tuesday, April 23: NT-RIS Poster Session

- *Nutrition Translation*
 - 8:30am – 5:00pm EST



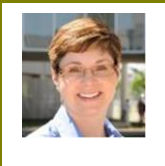
Chair
Susan S. Percival, PhD
University of Florida



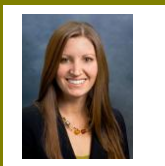
Past-Chair
Patricia S.
Williamson-Hughes, PhD
Tate & Lyle



Chair-Elect
Kari Hecker-Ryan, PhD
Kraft Foods



Treasurer
Michelle Braun, PhD
Solae



Secretary
Beth H. Rice, PhD
Dairy Research Institute



Communications Officer
Rachel Cheatham, PhD
Weber Shandwick

Elections

The NT-RIS will be electing 3 new officers this May. Please help us by nominating yourself or a colleague for a position.

Process:

- Send an e-mail to Beth.Rice@rosedmi.com including:
 - The name of the person you are nominating
 - The position you are nominating that person to fill
 - The reason that person would be a good fit for that position (this should be brief)
- After EB a survey monkey will be sent to the membership to vote on the candidates
- Officers begin their new positions June 01

Openings:

- Chair-Elect (3-year commitment)
- Secretary (2-year commitment)
- Communications Officer (3-year commitment)

Details:

- **Chair-Elect:** Becoming chair-elect means committing to a 3-year term. The first year is spent preparing to be chair, the term for which begins June 1 and ends May 31 of the following year. During this time the chair-elect will organize special program activities associated with the annual business meeting. The second year is spent as chair. The third year is spent being past-chair and helping the chair and chair-elect acclimate to their positions.
- **Secretary:** Secretary is a 2-year term. The secretary will record minutes during the annual business meeting; compile a list of the attendees and the names of individuals who volunteered to chair mini-symposia; and oversee electronic election of officers using the ASN list of RIS members. He or she will also prepare minutes from the Advisory Committee meetings and distribute them as appropriate.
- **Communications Officer:** Communications Officer will be a 3-year term this cycle. The communications officer is responsible for assisting the chair in preparing the RIS quarterly Nutrition Notes; assists the chair in preparing the agenda for the RIS business meeting during EB; and helps to prepare the RIS annual report for the ASN executive committee. He or she will participate in other communication activities as appropriate.

Student Update: Can't-Miss Student Events at EB 2013

Calling all NT-RIS Students and Mentors – be sure to check out these student-centric events. These sessions are great opportunities to network with other students as well as a vast array of nutrition professionals. Remember, it's never too early to take advantage of career development sessions!

Sunday, April 21

- **Graduate Student Breakfast**

- 6:45am-8:00am EST
- Westin Boston Waterfront Grand Ballroom A
- This event is an excellent opportunity to connect with other ASN student members and view finalists for the SIG poster competition supported by the Dairy Research Institute

- **Navigating the Current Job Market – Grab Hold of Your Future Now!**

- 3:00pm–5:00pm EST
- Boston Convention Center, Room 151 A/B
- This session sponsored by the Young Professional Interest Group focuses on finding a career in the current job market and making the most out of your experiences

Monday, April 22

- **SIG Meets the Fellows**

- 10:30am -11:30am EST
- Westin Boston Waterfront, Lewis.
- Don't miss the opportunity to network with ASN's newest class of Fellows! This prestigious honor is awarded to individuals with distinguished careers in nutrition and who are at least sixty-five years of age.

- **Speed Mentoring**

- 7:30pm - 9:00pm EST
- Westin Boston Waterfront, Grand Ballroom C
- A uniquely fun and informative event that allows you to network with a large number of professionals representing a variety of nutrition-related careers.

Space limited, RSVP required by April 5th to Rachele Pojednic (Rachele.pojednic@tufts.edu) and Katie Oster (koster@nutrition.org)

Monday, April 22 (continued from previous page)

- **FASEB Y.E.S. Mixer**
 - 9:00pm-11:00pm EST
 - Westin Boston Waterfront, Galleria
 - Don't miss the chance to catch up with old friends who are attending EB

Tuesday, April 23

- **Social Media and Mobile Technology for Nutrition Education and Research**
 - 10:30am-12:00pm EST
 - Boston Convention Center, Room 151 A/B
 - Sponsored by the Student Interest Group, this symposium investigates the impact of mobile technologies on careers in the nutrition field

All Week, April 21 – 24

- **EB2013/FASEB Career Center**
 - Take advantage of free career development seminars, workshops, and 1-on-1 sessions. Visit <http://bit.ly/CareerCtrAtEB> for more information or to register and post your resume.