



Nutrition Translation - From Bench to Consumer

October 2012

In This Issue

- Abstracts Due
- We Want to Hear from You
- Publications: Experimental Biology 2012
- Meet the Officers
- Member Spotlight
- Networking – Annual Business Meeting
- Staying Informed

Abstracts Due

Hard to believe, but it is that time of year! The abstract deadline for Experimental Biology 2013 is November 8, 2012. We encourage all members to get involved and submit an abstract to showcase the many ways nutrition is “translated” in our evolving field. Thanks to your numerous submissions last year, the NT-RIS was able to showcase its members’ research findings in two min-symposia and three poster sessions. Take this opportunity to share your work with your peers and bump up our RIS visibility in 2013.

We Want to Hear from You



The NT-RIS leadership is always looking to communicate the importance of translation to the nutrition science community. If you have ideas for the next NT-RIS symposium you would like to see programmed at EB, please send them to our secretary, Beth Rice (Beth.Rice@rosedmi.com)

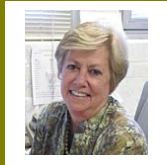
Publications: Experimental Biology 2012

The NT-RIS sponsored symposium, *Real-World Nutritional Translation Blended with Food Science* will be published in *Advances in Nutrition*. Publication will be a two-step process: first, a short summary of the session will be published in late 2012; then, pending acceptance, a full review of the topics that were covered will come out in early 2013. The session, chaired by Mario Ferruzzi, PhD and Roger Clemens, DrPH, explored how nutrition science intersects with food science to create a more healthful food supply.

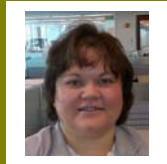
Meet the Officers

The NT-RIS leadership election took place at the annual meeting held at EB on April 23, 2012. The NT-RIS is pleased the following individuals are serving in officer positions:

- Chair – Susan S. Percival, PhD
- Past-Chair – Patricia S. Williamson - Hughes, PhD
- Chair-Elect – Kari Hecker - Ryan, PhD
- Treasurer – Michelle Braun, PhD
- Secretary – Beth H. Rice, PhD
- Communications Officer – Rachel Cheatham, PhD



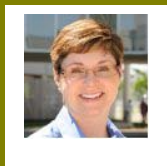
Chair
Susan S. Percival, PhD
University of Florida



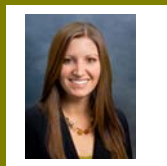
Past-Chair
Patricia S.
Williamson-Hughes, PhD
Tate & Lyle



Chair-Elect
Kari Hecker-Ryan, PhD
Kraft Foods



Treasurer
Michelle Braun, PhD
Solae



Secretary
Beth H. Rice, PhD
Dairy Research Institute



Communications Officer
Rachel Cheatham, PhD
Weber Shandwick

The NT-RIS 2012 – 2013 Board of Advisors includes:

- **Mario Ferruzzi, PhD** Associate Professor, Nutrition Science, Purdue University
- **Marcia D. Greenblum, MS, RD** Senior Director, Nutrition Education, Egg Nutrition Center
- **Cathy Kapica, PhD, RD** Adjunct Professor, Nutrition, Tufts University
- **Shalene McNeill, PhD, RD** Executive Director of Nutrition Research, National Cattlemen's Beef Association
- **Rebecca Replogle** Student Representative, Nutrition Science, Purdue University
- **Donna M. Winham, DrPH** Senior Consultant, Howell Research Associates, LLC
- **Lewis P. Rubin, MD**, Chief, Division of Neonatology, University of South Florida Health

Member Spotlight

Rebecca Replogle, PhD Candidate, Purdue University



Rebecca is in the final year of her doctoral program. Her research focuses on finding genetic loci affecting intestinal calcium absorption under adequate and low dietary calcium intake levels. Rebecca recently received a National Institute of Food & Agriculture predoctoral fellowship to expand this work to vitamin D. In a year, Rebecca hopes to begin a career bringing together basic, translational, and clinical research findings in nutrition to

communicate their impact on individual health in a meaningful way.

Networking: The Annual Business Meeting

Our annual business meeting will be held at Experimental Biology again this year. We are currently seeking sponsors who are interested in connecting more with the NT-RIS leadership and members. If you are interested in sponsoring this event, please contact Michelle Braun (mbraun@solae.com) for more information. Similarly to last year's meeting, the annual business meeting will be a luncheon where members can network with each other.

Staying Informed

Check out the NT-RIS homepage on the ASN website: <http://www.nutrition.org/about-asn/research-interest-sections/nutrition-translation-ris/>.